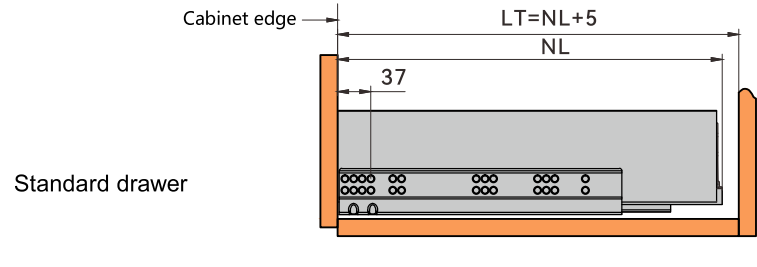


# SLIM DOUBLE WALL DRAWER (METAL SIDE SERIES)

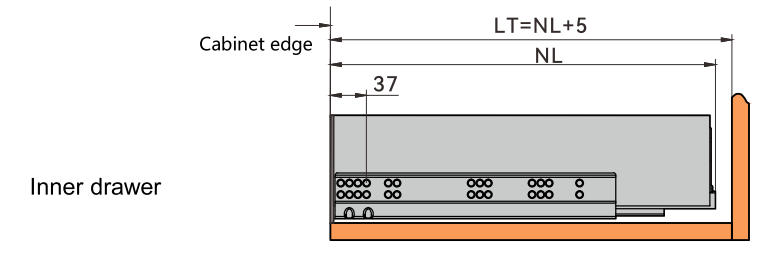
## Standard drawer installation dimensions (mm)

NL= Slide length  
LT= Internal cabinet depth

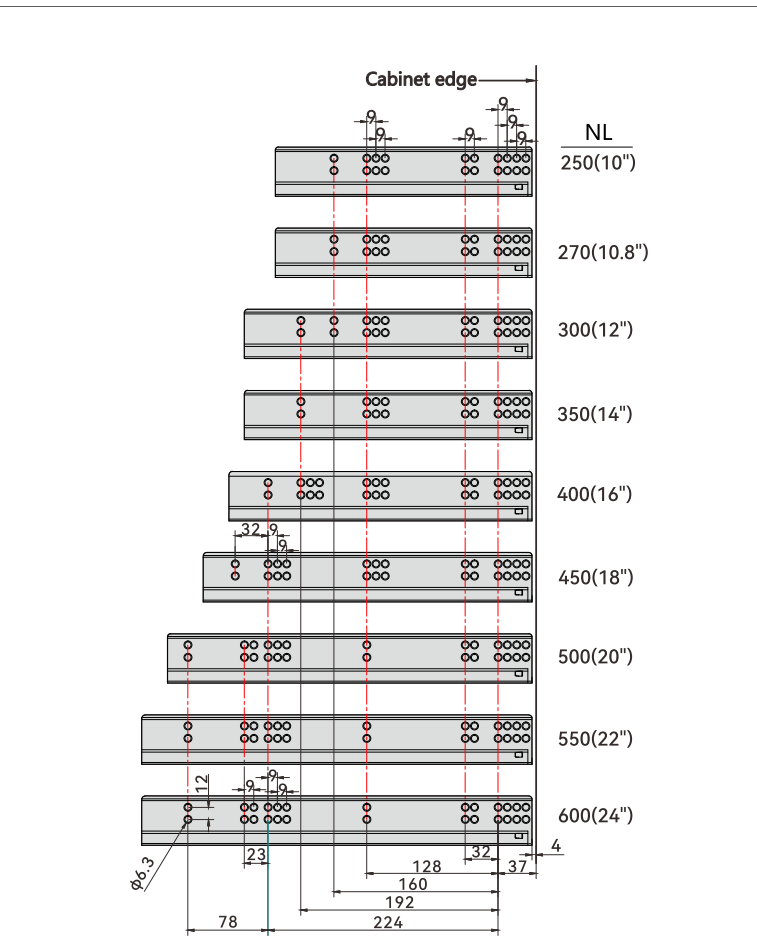


## Inner drawer installation dimensions (mm)

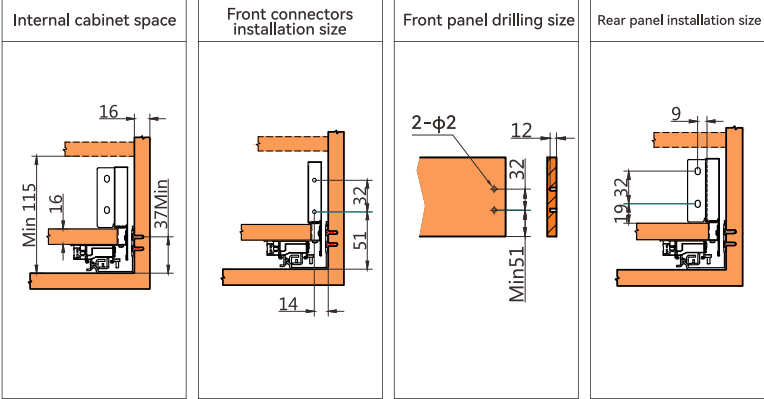
NL= Slide length  
LT= Internal cabinet depth



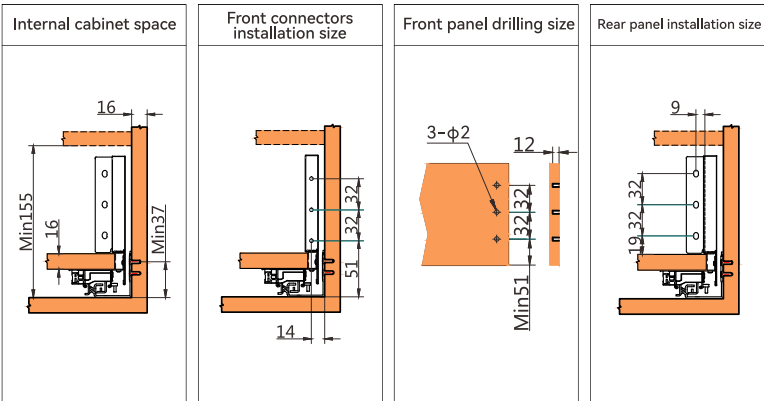
## Drawer slide installation dimensions (mm)



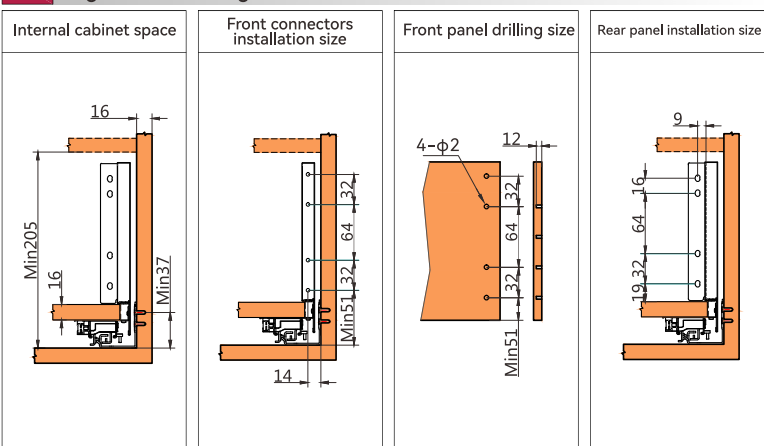
## L Low Drawer Height L



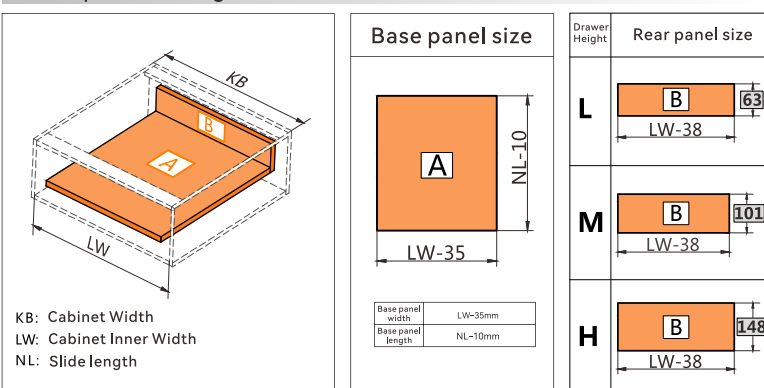
## M Medium Drawer Height M



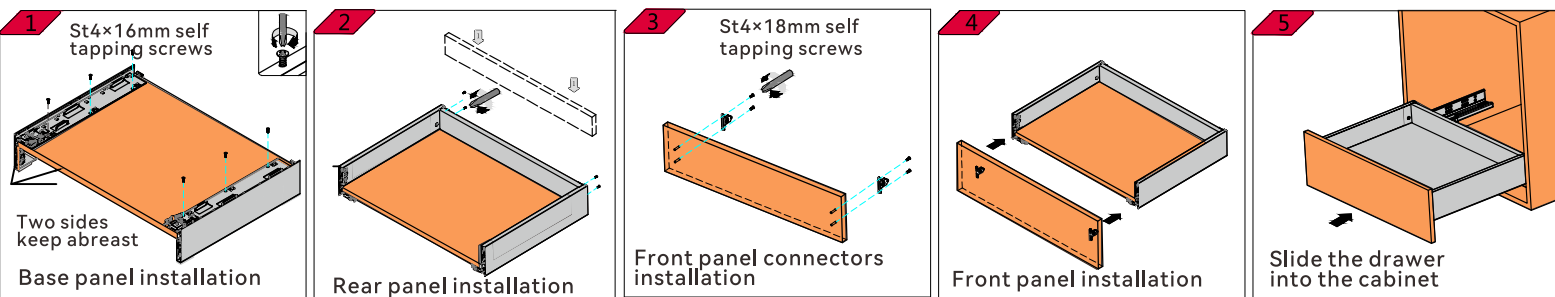
## H High Drawer Height H



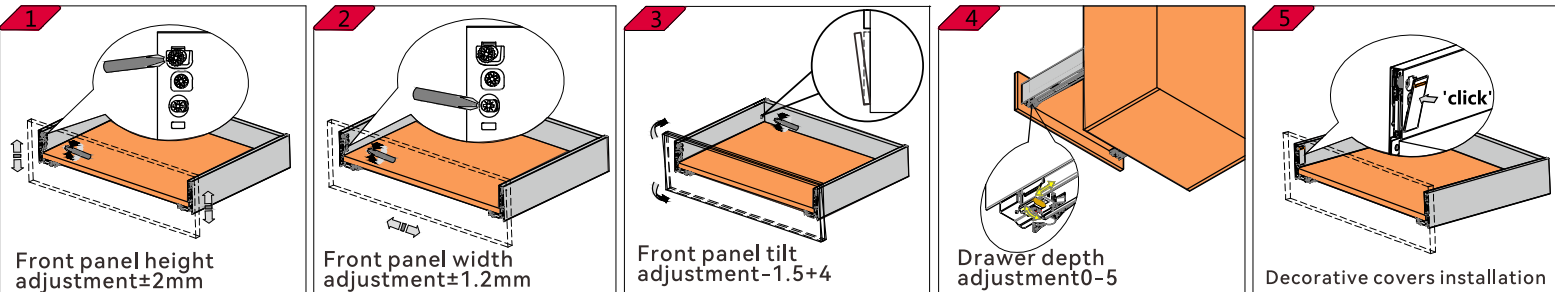
## 16mm panel cutting size



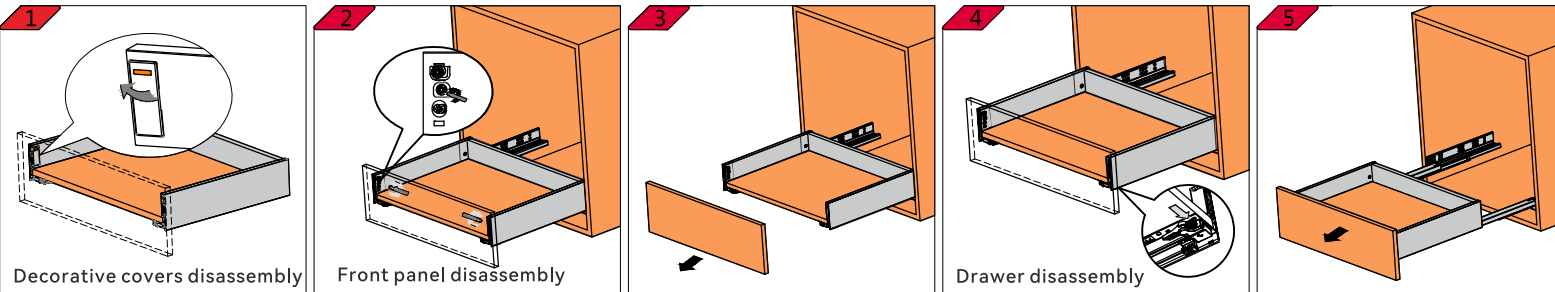
## Drawer Installation Demonstration



## Drawer Adjustment Demonstration



## Drawer Disassembly Demonstration



## Inner Drawer Installation Demonstration

